

ISO9001:2000

ASTM,DIN,BS,ISO,  
JIS,API,AS,GB



# RECOMB

## SHANGHAI RECOMB PIPING SYSTEM CO.,LTD.

Add: No.270, Yixian Rd.,  
Shanghai 200434 china

Tel: 0086—21—65421760

Fax: 0086—21—65366725

Website: [www.recomb.com.cn](http://www.recomb.com.cn)

E-mail: [sales@recomb.com.cn](mailto:sales@recomb.com.cn)



RECOMB reserves the right to change products specifications and or designs without notice

© Copyright 2009 Recomb

**SHANGHAI RECOMB PIPING SYSTEM CO.,LTD.**

**WWW.RECOMB.COM.CN**

**JSTECH INDUSTRIES, INC.**  
Telephones: (+632) 668-2889 . 661-6141 . 646-5915 . 985-1843  
Mobile: (+63917) 577-1162 . (+63908) 817-8995  
TeleFax: (+632) 655-0273  
Email: [junagbayani@piddtsi.net](mailto:junagbayani@piddtsi.net) . [sales@jngtech.com](mailto:sales@jngtech.com)



## A GLANCE OF PROJECTS





## TABLE OF CONTENTS

The Company	1
Grooved End Method	2
Certificates	3
Product Series	4
Material Specification	6
<b>Grooved Coupling</b>	
Rigid Coupling	7
Flexible Coupling	8
Standard Rigid Coupling	9
Standard Flexible Coupling	10
Reducing Coupling	11
<b>Mechanical Tee</b>	
Mechanical Tee Threaded	11
Mechanical Tee Grooved	14
Strap Tee	16
Branch Outlet	17
<b>Grooved Fitting</b>	
Standard Elbow、 Tee 、 Cross	18
Short Radius Elbow、 Tee	19
Reducing Tee	19
Reducing Cross	21
Reducer Grooved	21
Reducer Threaded	23
Eccentric Reducer	24
Reducing End-line Elbow	25
Drain Elbow	25
Cap with Eccentric Hole	26
End Cap	26
<b>Grooved Flange</b>	
Grooved Flange Table E	27
Grooved Flange ANSI150	27
Grooved Flange PN16	28
Hinged Flange Adapter	28
<b>Installation Instruction</b>	
Gasket Selection	29
Global Pipe Size	30
Pipe Roll Groove Specifications	31
Pipe Cut Groove Specifications	32
Pipe Preparation Tools	33
Applications	34
Warranty	35



## THE COMPANY

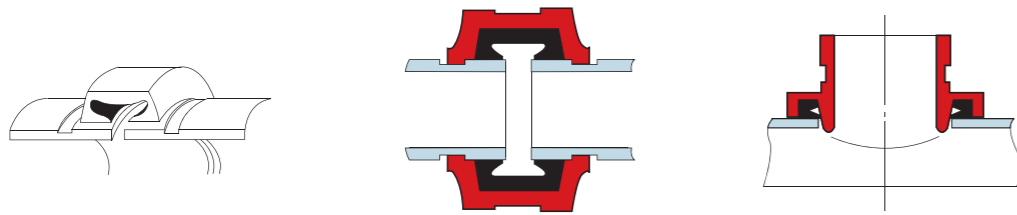
As a leading company of grooved piping products in China, Shanghai Recomb is the first and one of the largest manufacturers with 10 years of industry experience in design and manufacture.

Our ISO9001:2000 certified facilities include mechanical shop, rubber gasket shop and two foundries with automatic production lines, which make us to compete with others from very beginning. Integrated quality control system with 100% function-wise inspection ensures us to provide high quality products to our customers. Full ranges of our products are all FM approved and UL listed. Besides, we provide our clients strong technical support. That's the reason why we are also able to make customized OEM products for our customers.

Currently, we offer grooved couplings and fittings in size from 1/2" through 24", with the various gaskets. Our products are supplied to customers worldwide for use in a variety of industries and applications, from plumbing, fire protection and mechanical to water treatment, mining and oil & gas. Our sales network covers most of Chinese major cities, some of countries in Europe, Asia, Middle East, America and Australia.

Our mission is to supply high quality products to meet our customer's demand. We are willing to cooperate with customers worldwide for the development of new business.





Grooved end method provides piping system the most versatile, economical and reliable connection. The following table shows the advantage of grooved products comparing with other piping methods:

Comparative Advantages	Threaded	Flanged	Welded	Grooved
Allows angular deflection-misalignment				•
Expansion, contraction or, no need for expansion joint				•
Reclaimable, no need for union		•		•
Allows fast connection with valves				•
Allows rotation of pipe for alignment		•		•
No special skills required	•			•
No welding slags	•			•
No weakening of pipe at joints		•	•	•
No fire hazard during installation	•	•		•
Quick installation	•			•
Easy to maintain				•
Allows prefabrication	•	•		•
Low installation cost	•			•

Recomb products all products size up to 24" for grooved piping system.

With the housing key holding into the groove, Rigid coupling is designed to achieve straight run of pipe without any flex at the joint, while Flexible coupling accommodates expansion/contraction and deflection for piping system.





XGQT1  
Rigid Coupling



XGQT2  
Flexible Coupling



XGQT1G  
Standard Rigid Coupling



XGQT2G  
Standard Flexible Coupling



XGQT2Y  
Reducing Coupling



XGQT3  
Mechanical Tee Threaded



XGQT3  
Mechanical Tee Grooved



XGQT3  
Mechanical Cross



XGQT3U  
Strap Tee



XGQT3D  
Branch Outlet



XGQT01  
90° Elbow



XGQT02  
45° Elbow



XGQT10  
22.5° Elbow



XGQT20  
11.25° Elbow



XGQT03  
Tee



XGQT05  
Cross



XGQT04  
Reducing Tee



XGQT05  
Reducing Cross



XGQT07  
Reducer Threaded



XGQT07  
Reducer Grooved



XGQT07P  
Eccentric Reducer



01  
Reducing End-line Elbow



XGQT01P  
Drain Elbow



06P  
Cap with Eccentric Hole



XGQT06  
End Cap



ANSI150 XGQT08D  
Grooved Flange ANSI 150



ANSI150 XGQT08  
Grooved Flange ANSI 150



08A-T-E  
Grooved Flange Table E



XGQT08  
Grooved Flange PN16



XGQT08B  
Hinged Flange Adapter



KGQT2  
Shouldered Coupling



KGQT2K  
Shouldered Quick-release Coupling



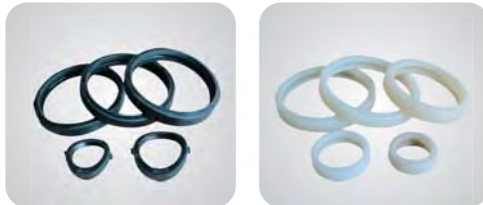
SQT  
HDPE CLAMP

This catalog features our general products offering. For more and updated information, please contact our head office in Shanghai.



### COUPLING HOUSING AND FITTINGS

Ductile Iron conforms to ASTM A536 and ISO 1083.



### GASKET

EPDM as designated in accordance with ISO 6182, conforming to FM 1920 and UL 213.



### BOLTS/NUTS

#### ANSI Bolts/Nuts

Heat treated, zinc electroplated, or galvanized oval neck track head bolts and hex nuts make of carbon steel in accordance with ASTM A183.



#### Metric Bolts/Nuts

Heat treated, zinc electroplated, or galvanized oval neck track head bolts and hex nuts make of carbon steel in accordance with ISO 898.

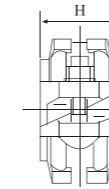
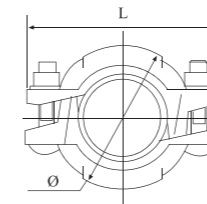


### FINISH

Available on Red or Orange paint, Epoxy coating and hot dip galvanized. For special finish, please contact your local distributor or us.



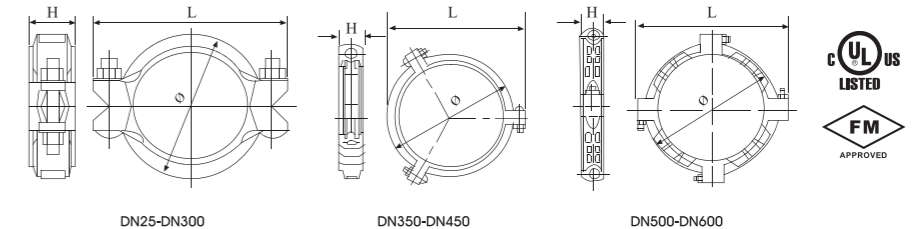
**XGQT1  
Rigid Coupling**



Nominal Size	Pipe O.D.		Max.Working Pressure		Max End Load	Bolt Size	Dimensions		
	Inch	mm	KPa	psi	N		φ	L	H
1	25	33.7	2065	300	2230	2-M10x55	58.5	94	47
1 1/4	32	42.4	2065	300	3530	2-M10x55	67.5	104	47
1 1/2	40	48.3	2065	300	4581	2-M10x55	74.5	111	47
2	50	57	2065	300	6379	2-M10x65	86	119	47
2	50	60.3	2065	300	7139	2-M10x65	88	121	47
2 1/2	65	73	2065	300	10463	2-M10x65	96.5	134	47
2 1/2	65	76.1	2065	300	11371	2-M10x65	104	136	47
3	80	88.9	2065	300	15518	2-M10x65	116	150	47
4	100	108	2065	300	22902	2-M10x65	140	176	51
4	100	114.3	2065	300	25652	2-M10x65	148	185	51
5	125	133	2065	300	34732	2-M12x85	168	210	51
5	125	139.7	2065	300	38319	2-M12x85	173	216	51
5	125	141.3	2065	300	39202	2-M12x85	175	219	51
6	150	159	2065	300	49639	2-M12x85	192	236	51
6	150	165.1	2065	300	53521	2-M12x85	200	244	51
6	150	168.3	2065	300	55616	2-M12x85	204	248	51
8	200	216.3	2065	300	91863	2-M16x120	257	316	63
8	200	219.1	2065	300	94257	2-M16x120	258	332	63
10	250	267.4	1205	175	89853	2-M20x130	309	387	63
10	250	273	1205	175	93656	2-M20x130	318	395	63
12	300	318.5	1205	175	127476	2-M20x130	361	434	63
12	300	323.9	1205	175	131835	2-M20x130	372	445	63



**XGQT2  
Flexible Coupling**

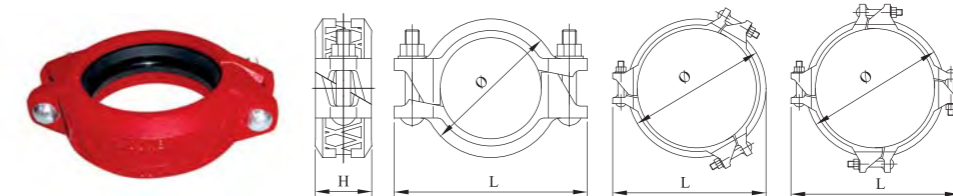


Nominal Size	Pipe O.D.		Max.Working Pressure		Allowance Pipe End Sep	Max End Load	Bolt Size	Dimensions		
	Inch	mm	Kpa	psi	mm	N		φ	L	H
1	25	33.7	2065	300	0-3	2230	2-M10x55	56.5	94	47
1 1/4	32	42.4	2065	300	0-3	3530	2-M10x55	65.5	104	47

All data contained here is subject to change without notice.  
Note: Max. working pressure refers to FM registration pressure.

**XGQT2**  
Flexible Coupling

Nominal Size		Pipe O.D.	Max. Working Pressure		Allowance Pipe End Sep	Max End Load	Bolt Size	Dimensions		
Inch	mm	mm	KPa	psi	mm	N	mm	φ	L	H
1 1/2	40	48.3	2065	300	0-3	4581	2-M10x55	72.5	111	47
2	50	57	2065	300	0-3	6379	2-M10x65	84	119	47
2	50	60.3	2065	300	0-3	7139	2-M10x65	86	121	47
2 1/2	65	73	2065	300	0-3	10463	2-M10x65	98.5	134	47
2 1/2	65	76.1	2065	300	0-3	11371	2-M10x65	102	136	47
3	80	88.9	2065	300	0-5	15518	2-M10x65	114	150	47
4	100	108	2065	300	0-5	22902	2-M12x85	138	180	51
4	100	114.3	2065	300	0-5	25652	2-M12x85	146	189	51
5	125	133	2065	300	0-5	34732	2-M16x100	166	223	51
5	125	139.7	2065	300	0-5	38319	2-M16x100	171	229	51
5	125	141.3	2065	300	0-5	39202	2-M16x100	172.5	232	51
6	150	159	2065	300	0-5	49639	2-M16x100	190	249	51
6	150	165.1	2065	300	0-5	53521	2-M16x100	198	258	51
6	150	168.3	2065	300	0-5	55616	2-M16x100	202	262	51
8	200	216.3	2065	300	0-4.8	91863	2-M20x130	255	324	63
8	200	219.1	2065	300	0-4.8	94257	2-M20x110	256	332	63
10	250	267.4	1205	175	0-4.8	89853	2-M20x150	307	379	63
10	250	273	1205	175	0-4.8	93656	2-M20x150	316	390	63
12	300	318.5	1205	175	0-4.8	127476	2-M20x150	359	434	63
12	300	323.9	1205	175	0-4.8	131835	2-M20x150	370	442	63
12	300	325	1205	175	0-4.8	132732	2-M20x150	370	442	63
14	350	355.6	1205	175	0-6	158903	3-M22x130	403	490	74
14	350	377	1205	175	0-6	178604	3-M22x130	422	514	74
16	400	406.4	1205	175	0-6	207547	3-M22x130	454	566	74
16	400	426	1205	175	0-6	228049	3-M22x130	471	570	74
18	450	457.2	1205	175	0-6	262677	3-M22x130			76
18	450	480	1205	175	0-6	289529	3-M22x130	526	620	76
20	500	508	1205	175	0-6	324292	4-M22x130	558	660	78
20	500	530	1205	175	0-6	352989	4-M22x130	576	670	78
24	600	610	1205	175	0-6	467595	4-M22x130			78
24	600	630	1205	175	0-6	498759	4-M22x130	680	790	78



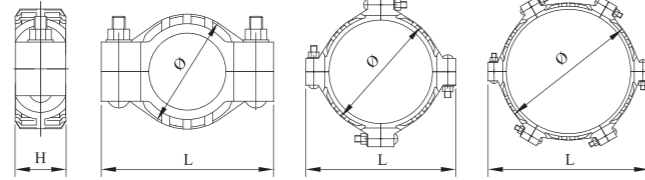
**XGQT1G**  
Standard Rigid Coupling

Nominal Size		Pipe O.D.	Max. Working Pressure		Allowable Pipe End Sep	Max End Load	Bolt Size	Dimensions		
Inch	mm	mm	KPa	psi	mm	N	mm	φ	L	H
1	25	33.7	5500	800	3	4906	2-M10×50	60	98	44
1 1/4	32	42.4	5500	800	3	7766	2-M10×50	70	108	47
1 1/2	40	48.3	5500	800	3	10478	2-M10×50	76	114	47
2	50	57								
2	50	60.3	5500	800	3	15707	2-M10×60	88	128	47
2 1/2	65	73	5500	800	3	23020	2-M12×75	102	147	47
2 1/2	65	76.1	5500	800	3	25016	2-M12×75	105	150	47
3	80	88.9	5500	800	3	34139	2-M12×75	117	162	47
4	100	108	5500	800	6	50384	2-M12×75	142	188	53
4	100	114.3	5500	800	6	56434	2-M12×75	150	196	53
5	125	133	5500	800	6	76410	2-M16×100	170	228	53
5	125	139.7	5500	800	6	84301	2-M16×100	175	233	53
5	125	141.3	5500	800	6	86244	2-M16×100	177	236	53
6	150	159	4825	700	6	95307	2-M16×100	195	253	53
6	150	165.1	4825	700	6	102760	2-M16×100	203	263	53
6	150	168.3	4825	700	6	106783	2-M16×100	207	268	53
8	200	216.3	4125	600	6	146981	2-M20×130	259	336	65
8	200	219.1	4125	600	6	150811	2-M20×130	262	238	65
10	250	267.4	4125	600	6	224632	2-M22×150	320	392	65
10	250	273	4125	600	6	234140	2-M22×150	323	402	65
12	300	318.5	4125	600	6	318690	2-M22×150	375	448	65
12	300	323.9	4125	600	6	329587	2-M22×150	379	458	65
12	300	325	4125	600		331830				
14	350	355.6	2400	360	5	208560	3-M22×130	407	494	73
14	350	377								
16	400	406.4	2400	360	5	272405	3-M22×130	458	546	73
16	400	426								
18	450	457.2	2400	360	5	344763	3-M22×130	512	596	76
18	450	480								
20	500	508	2065	300	5	425633	4-M24×130	562	662	78
20	530	500								
24	610	600	1725	250	5	511432	4-M24×130	664	764	78
24	600	630								

All data contained here is subject to change without notice.  
Note: Max. working pressure refers to FM registration pressure.

All data contained here is subject to change without notice.  
Note: Max. working pressure refers to FM registration pressure.

**JNTECH INDUSTRIES, INC.**  
 Telephones: (+632) 668-2899 . 661-6141 . 646-5915 . 985-1843  
 Mobile: (+63917) 577-1162 . (+63908) 817-8995  
 TeleFax: (+632) 655-0273  
 Email: junagbayani@pltdsl.net . sales@jntech.com

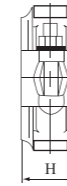
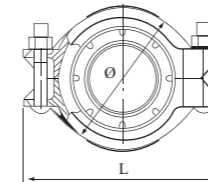


**XGQT2G**  
Standard Flexible Coupling

Nominal Size		Pipe O.D.	Max.Working Pressure		Allowable Pipe End Sop	Max End Load	Bolt Size	Dimensions		
Inch	mm	mm	KPa	psi	mm	N	mm	φ	L	H
1	25	33.7	5500	800	3	4906	2-M10×50	60	100	44
1 1/4	32	42.4	5500	800	3	7766	2-M12×70	69	112	48
1 1/2	40	48.3	5500	800	3	10478	2-M12×70	75	119	48
2	50	57								
2	50	60.3	5500	800	3	15707	2-M12×70	86	132	48
2 1/2	65	73	5500	800	3	23020	2-M12×75	103	145	48
2 1/2	65	76.1	5500	800	3	25016	2-M12×75	106	149	48
3	80	88.9	5500	800	3	34139	2-M12×75	118	162	48
4	100	108	5500	800	6.8	50384	2-M16×85	144	202	54
4	100	114.3	5500	800	6.8	56434	2-M16×85	152	212	54
5	125	133	5500	800	6.8	76410	2-M20×110	173	246	54
5	125	139.7	5500	800	6.8	84301	2-M20×110	178	252	54
5	125	141.3	5500	800	6.8	86244	2-M20×110	180	255	54
6	150	159	4825	700	6.8	95307	2-M20×110	199	275	54
6	150	165.1	4825	700	6.8	102760	2-M20×110	207	286	54
6	150	168.3	4825	700	6.8	106783	2-M20×110	211	290	54
8	200	216.3	4125	600		146981				
8	200	219.1	4125	600	6.8	150811	2-M22×130	263	346	64
10	250	267.4	4125	600		224632				
10	250	273	4125	600	6.8	234140	2-M24×150	327	422	67
12	300	318.5	4125	600		318690				
12	300	323.9	4125	600	6.8	329587	2-M24×150	380	474	67
12	300	325	4125	600		331830				
14	350	355.6	2065	300	5	208560	4-M24×130	405	507	74
14	350	377	2400	360	5	279070	4-M24×130	426	527	76
16	400	406.4	2065	300	5	272405	4-M24×130	450	559	74
16	400	426	2400	360	5	356327	4-M24×130	476	577	76
18	450	457.2	2065	300	5	344763	4-M27×150	510	623	80
18	450	480	2400	360	5	452389	4-M24×130	532	633	78
20	500	508	2065	300	5	425633	4-M27×150	561	675	80
20	500	530	2400	360	5	463298	4-M27×150	583	696	81
24	600	610	1725	250	5	511432	6-M27×150	663	777	80
24	600	630	2400	360	5	779311	6-M27×150	684	797	81



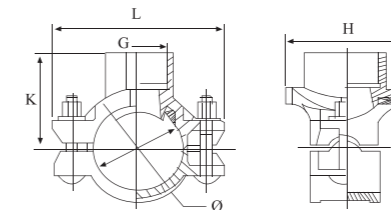
**XGQT2Y**  
Reducing Coupling



Nominal Size		Pipe O.D.	Max.Working Pressure		Dimensions		
Inch	mm	mm	KPa	psi	φ	L	H
2x1 1/2	50x40	60.3x48.3	2065	300	87	124	47
2 1/2x2	65x50	73x60.3	2065	300	101	136	47
2 1/2x2	65x50	76.1x60.3	2065	300	104	138	47
3x2	80x50	88.9x60.3	2065	300	146.5	161	47
3x2 1/2	80x65	88.9x73	2065	300	146.5	161	47
3x2 1/2	80x65	88.9x76.1	2065	300	115	152	47
4x2 1/2	100x65	108x76.1	2065	300	142	182	51
4x3	100x80	108x88.9	2065	300	142	182	51
4x2	100x50	114.3x60.3	2065	300	148	191	51
4x2 1/2	100x65	114.3x73	2065	300	148	191	51
4x2 1/2	100x65	114.3x76.1	2065	300	148	191	51
4x3	100x80	114.3x88.9	2065	300	148	191	51
5x4	125x100	139.7x114.3	2065	300	166	191	51
6x3	150x80	159x88.9	2065	300	190	251	51
6x4	150x100	159x108	2065	300	190	251	51
6x4	150x100	159x114.3	2065	300	190	251	51
6x4	150x100	165x114.3	2065	300	198	260	51
6x3	150x80	168.3x88.9	2065	300	203	265	55
6x4	150x100	168.3x114.3	2065	300	203	263	51
8x6	200x150	219.1x159	2065	300	257	234	63
8x6	200x150	219.1x165.1	2065	300	257	234	63
8x6	200x150	219.1x168.3	2065	300	257	334	63



**XGQT3**  
Mechanical Tee Threaded



Nominal Size		Pipe O.D.	Bolt Size	Max.Working Pressure		Dimensions				Hole Cut Dia	
Inch	mm	mm	mm	KPa	psi	K	φ	L	H	Inch	mm
2x1/2	50x15	60.3xG1/2	2-M10x65	2065	300	60	89	126	73	1 1/2"	38
2x3/4	50x20	60.3xG3/4	2-M10x65	2065	300	60	89	126	73	1 1/2"	38

All data contained here is subject to change without notice.  
Note: Max. working pressure refers to FM registration pressure.

All data contained here is subject to change without notice.  
Note: Max. working pressure refers to FM registration pressure.

**XGQT3**  
Mechanical Tee Threaded

Nominal Size		Pipe O.D.	Bolt Size	Max. Working Pressure		Dimensions				Hole Cut Dia	
Inch	mm	mm	mm	KPa	psi	K	φ	L	H	Inch	mm
2x1	50x25	60.3xG1	2-M10x65	2065	300	66.5	89	126	73	1 1/2"	38
2x1 1/4	50x32	60.3xG1 1/4	2-M10x65	2065	300	66.5	86	126	73	1 3/4"	44
2x1 1/2	50x40	60.3xG1 1/2	2-M10x65	2065	300	66.5	86	126	73	1 3/4"	44
2 1/2x1/2	65x15	73xG1/2	2-M12x75	2065	300	66.5	101	132	73	1 1/2"	38
2 1/2x3/4	65x20	73xG3/4	2-M12x75	2065	300	66.5	101	132	73	1 1/2"	38
2 1/2x1	65x25	73xG1	2-M12x75	2065	300	73.5	101	132	73	1 1/2"	38
2 1/2x1 1/4	65x32	73xG1 1/4	2-M12x75	2065	300	75.5	101	132	80	1 3/4"	44
2 1/2x1 1/2	65x40	73xG1 1/2	2-M12x75	2065	300	75.5	101	132	83	1 7/8"	48
2 1/2x1/2	65x15	76.1xG1/2	2-M12x75	2065	300	67	104	138	73	1 1/2"	38
2 1/2x3/4	65x20	76.1xG3/4	2-M12x75	2065	300	67	104	138	73	1 1/2"	38
2 1/2x1	60x25	76.1xG1	2-M12x75	2065	300	75	104	138	73	1 1/2"	38
2 1/2x1 1/4	65x32	76.1xG1 1/4	2-M12x75	2065	300	77	104	138	80	1 3/4"	44
2 1/2x1 1/2	65x40	76.1xG1 1/2	2-M12x75	2065	300	77	104	138	83	1 7/8"	48
3x 1/2	80x15	88.9xG1/2	2-M12x75	2065	300	74	118	150	73	1 1/2"	38
3x3/4	80x20	88.9xG3/4	2-M12x75	2065	300	74	118	150	73	1 1/2"	38
3x1	80x25	88.9xG1	2-M12x75	2065	300	82	118	150	73	1 1/2"	38
3x1 1/4	80x32	88.9xG1 1/4	2-M12x75	2065	300	84.5	118	150	80	1 3/4"	44
3x1 1/2	80x40	88.9xG1 1/2	2-M12x75	2065	300	84.5	118	150	93	2 1/8"	54
3x2	80x50	88.9xG2	2-M12x75	2065	300	85.5	113	150	94	2 1/2"	64
4x1/2	100x15	108xG1/2	2-M12x75	2065	300	84	137	174	73	1 1/2"	38
4x3/4	100x20	108xG3/4	2-M12x75	2065	300	84	137	174	73	1 1/2"	38
4x1	100x25	108xG1	2-M12x75	2065	300	92	137	174	73	1 1/2"	38
4x1 1/4	100x32	108xG1 1/4	2-M12x75	2065	300	94	137	174	80	1 3/4"	44
4x1 1/2	100x40	108xG1 1/2	2-M12x75	2065	300	94	137	174	93	2 1/8"	54
4x2	100x50	108xG2	2-M12x75	2065	300	98	137	174	107	2 3/4"	70
4x2 1/2	100x65	108xG2 1/2	2-M12x75	2065	300	102	137	174	117	3 1/8"	79
4x1/2	100x15	114.3xG1/2	2-M12x75	2065	300	87	144	180	73	1 1/2"	38
4x3/4	100x20	114.3xG3/4	2-M12x75	2065	300	87	144	180	73	1 1/2"	38
4x1	100x25	114.3xG1	2-M12x75	2065	300	95	144	180	73	1 1/2"	38
4x1 1/4	100x32	114.3xG1 1/4	2-M12x75	2065	300	97	144	180	80	1 3/4"	44
4x1 1/2	100x40	114.3xG1 1/2	2-M12x75	2065	300	97	144	180	93	2 1/8"	54
4x2	100x50	114.3xG2	2-M12x75	2065	300	101	144	180/184	107	2 3/4"	70
4x2 1/2	100x65	114.3xG2 1/2A	2-M12x75	2065	300	105	144	180/184	117	3 1/8"	79
4x2 1/2	100x65	114.3xG2 1/2	2-M12x75	2065	300	105	144	180/184	117	3 1/8"	79
4x3	100x80	114.3xG3	2-M12x75	2065	300	102.5	139	184	119	3 1/2"	89
5x1/2	125x15	133xG1/2	2-M12x95	2065	300	96.5	162	196	73	1 1/2"	38
5x3/4	125x20	133xG3/4	2-M12x95	2065	300	96.5	162	196	73	1 1/2"	38

All data contained here is subject to change without notice.  
Note: Max. working pressure refers to FM registration pressure.

**XGQT3**  
Mechanical Tee Threaded

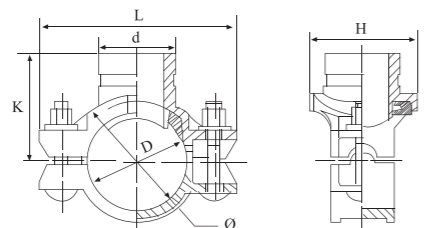
Nominal Size		Pipe O.D.	Bolt Size	Max. Working Pressure		Dimensions				Hole Cut Dia	
Inch	mm	mm	mm	KPa	psi	K	φ	L	H	Inch	mm
5x1	125x25	133xG1	2-M12x95	2065	300	104.5	162	196	73	1 1/2"	38
5x1 1/4	125x32	133xG1 1/4	2-M12x95	2065	300	106.5	162	196	80	1 3/4"	44
5x1 1/2	125x40	133xG1 1/2	2-M12x95	2065	300	107.5	164	196	93	2 1/8"	54
5x2	125x50	133xG2	2-M16x100	2065	300	111.5	165	213	107	2 3/4"	70
5x2 1/2	125x65	133xG2 1/2	2-M16x100	2065	300	115.5	165	213	117	3 1/8"	79
5x3	125x80	133xG3	2-M16x100	2065	300	115.5	165	213	129	3 1/2"	89
5x1/2	125x15	139.7xG1/2	2-M12x95	2065	300	100	170	203	73	1 1/2"	38
5x3/4	125x20	139.7xG3/4	2-M12x95	2065	300	100	170	203	73	1 1/2"	38
5x1	125x25	139.7xG1	2-M12x95	2065	300	108	170	203	73	1 1/2"	38
5x1 1/4	125x32	139.7xG1 1/4	2-M12x95	2065	300	110	170	203	80	1 3/4"	44
5x1 1/2	125x40	139.7xG1 1/2	2-M12x95	2065	300	111	172	203	93	2 1/8"	54
5x2	125x50	139.7xG2	2-M16x100	2065	300	115	172	220	107	2 3/4"	70
5x2 1/2	125x65	139.7xG2 1/2 A	2-M16x100	2065	300	119	172	220	117	3 1/8"	79
5x2 1/2	125x65	139.7xG2 1/2	2-M16x100	2065	300	119	172	220	117	3 1/8"	79
5x3	125x80	139.7xG3	2-M16x100	2065	300	119	172	220	129	3 1/2"	89
6x1/2	150x15	159xG1/2	2-M12x95	2065	300	109.5	188	223	73	1 1/2"	38
6x3/4	150x20	159xG3/4	2-M12x95	2065	300	109.5	188	223	73	1 1/2"	38
6x1	150x25	159xG1	2-M12x95	2065	300	117.5	188	223	73	1 1/2"	38
6x1 1/4	150x32	159xG1 1/4	2-M12x95	2065	300	119.5	188	223	80	1 3/4"	44
6x1 1/2	150x40	159xG1 1/2	2-M12x95	2065	300	122	192	223	96	2 1/4"	57
6x2	150x50	159xG2	2-M16x100	2065	300	125.5	193	242	107	2 3/4"	70
6x2 1/2	150x65	159xG2 1/2	2-M16x100	2065	300	130	193	242	117	3 1/8"	79
6x3	150x80	159xG3	2-M16x100	2065	300	130	193	242	129	3 1/2"	89
6x1/2	150x15	165.1xG1/2	2-M12x95	2065	300	112.5	195	229	73	1 1/2"	38
6x3/4	150x20	165.1xG3/4	2-M12x95	2065	300	112.5	195	229	73	1 1/2"	38
6x1	150x25	165.1xG1	2-M12x95	2065	300	120.5	195	229	73	1 1/2"	38
6x1 1/4	150x32	165.1xG1 1/4	2-M12x95	2065	300	122.5	195	229	80	1 3/4"	44
6x1 1/2	150x40	165.1xG1 1/2	2-M12x95	2065	300	125	199	229	96	2 1/4"	57
6x2	150x50	165.1xG2	2-M16x100	2065	300	128.5	199	245	107	2 3/4"	70
6x2 1/2	150x65	165.1xG2 1/2A	2-M16x100	2065	300	133	199	245	117	3 1/8"	79
6x2 1/2	150x65	165.1xG2 1/2	2-M16x100	2065	300	133	199	245	117	3 1/8"	79
6x3	150x80	165.1xG3	2-M16x100	2065	300	133	199	245	129	3 1/2"	89
6x1/2	150x15	168.3xG1/2	2-M12x95	2065	300	114	198	232	73	1 1/2"	38
6x3/4	150x20	168.3xG3/4	2-M12x95	2065	300	114	198	232	73	1 1/2"	38
6x1	150x25	168.3xG1	2-M12x95	2065	300	122	198	232	73	1 1/2"	38
6x1 1/4	150x32	168.3xG1 1/4	2-M12x95	2065	300	124	198	232	80	1 3/4"	44
6x1 1/2	150x40	168.3xG1 1/2	2-M12x95	2065	300	126	201	232	96	2 1/4"	57

All data contained here is subject to change without notice.  
Note: Max. working pressure refers to FM registration pressure.

**JTECH INDUSTRIES, INC.**  
 Telephones: (+632) 668-2889 . 661-6141 . 646-5915 . 985-1843  
 Mobile: (+63917) 577-1162 . (+63908) 817-8995  
 TeleFax: (+632) 655-0273  
 Email: junagbayani@pltdtsi.net . sales@jntech.com

**XGQT3**  
Mechanical Tee Threaded

Nominal Size		Pipe O.D.	Bolt Size	Max.Working Pressure		Dimensions				Hole Cut Dia	
Inch	mm	mm	mm	KPa	psi	K	Φ	L	H	Inch	mm
6x2	150x50	168.3xG2	2-M16x100	2065	300	130	201	248	107	2 3/4"	70
6x2 1/2	150x65	168.3xG2 1/2A	2-M16x100	2065	300	134	201	248	117	3 1/8"	79
6x2 1/2	150x65	168.3xG2 1/2	2-M16x100	2065	300	134	201	248	117	3 1/8"	79
6x3	150x80	168.3xG3	2-M16x100	2065	300	134	201	248	129	3 1/2"	89
8x1	200x25	219.1xG1	2-M16x100	2065	300	147.5	249	300	73	1 1/2"	38
8x1 1/4	200x32	219.1xG1 1/4	2-M16x100	2065	300	149.5	249	300	80	1 3/4"	44
8x1 1/2	200x40	219.1xG1 1/2	2-M16x100	2065	300	151.5	253	300	96	2 1/4"	57
8x2	200x50	219.1xG2	2-M16x100	2065	300	155.5	253	300	107	2 3/4"	70
8x2 1/2	200x65	219.1xG2 1/2A	2-M16x100	2065	300	160	253	300	117	3 1/8"	79
8x2 1/2	200x65	219.1xG2 1/2	2-M16x100	2065	300	160	253	300	117	3 1/8"	79
8x3	200x80	219.1xG3	2-M16x100	2065	300	160	253	300	129	3 1/2"	89
10x2	250x50	273xG2	2-M20x110	1205	175	182.5	207	382	107	2 3/4"	70
10x2 1/2	250x65	273xG2 1/2	2-M20x110	1205	175	186.5	207	382	117	3 1/8"	79
10x3	250x80	273xG3	2-M20x110	1205	175	186.5	207	382	129	3 1/2"	89



**XGQT3**  
Mechanical Tee Grooved

Nominal Size		Pipe O.D.	Bolt Size	Max.Working Pressure		Dimensions				Hole Cut Dia	
Inch	mm	mm	mm	KPa	psi	K	Φ	L	H	Inch	mm
2x1	50x25	60.3x33.7	2-M10x65	2065	300	73	86	126	73	1 1/2"	38
2x1 1/4	50x32	60.3x42.4	2-M10x65	2065	300	73	86	126	73	1 3/4"	44
2x1 1/2	50x40	60.3x48.3	2-M10x65	2065	300	73	86	126	73	1 3/4"	44
2 1/2x1 1/4	65x32	73x42.4	2-M12x75	2065	300	77.5	101	132	80	1 3/4"	44
2 1/2x1 1/2	65x40	73x48.3	2-M12x75	2065	300	77.5	101	132	83	1 7/8"	48
2 1/2x1 1/4	65x32	76x42.4	2-M12x75	2065	300	79	104	138	80	1 3/4"	44
2 1/2x1 1/2	65x40	76x48.3	2-M12x75	2065	300	79	104	138	83	1 7/8"	48
3x1 1/4	80x32	88.9x42.4	2-M12x75	2065	300	86.5	118	150	80	1 3/4"	44
3x1 1/2	80x40	88.9x48.3	2-M12x75	2065	300	86.5	118	150	93	2 1/8"	54
3x2	80x50	88.9x60.3	2-M12x75	2065	300	85.5	113	150	94	2 1/2"	64

**XGQT3**  
Mechanical Tee Grooved

Nominal Size		Pipe O.D.	Bolt Size	Max.Working Pressure		Dimensions				Hole Cut Dia	
Inch	mm	mm	mm	KPa	psi	K	Φ	L	H	Inch	mm
4x1 1/4	100x32	108x42.4	2-M12x75	2065	300	98	137	174	80	1 3/4"	44
4x1 1/2	100x40	108x48.3	2-M12x75	2065	300	98	137	174	93	2 1/8"	54
4x2	100x50	108x60.3	2-M12x75	2065	300	98	137	174	107	2 3/4"	70
4x2 1/2	100x65	108x76.1	2-M12x75	2065	300	102	137	174	117	3 1/8"	79
4x1 1/4	100x32	114.3x42.4	2-M12x75	2065	300	101	144	180	80	1 3/4"	44
4x1 1/2	100x40	114.3x48.3	2-M12x75	2065	300	101	144	180	93	2 1/8"	54
4x2	100x50	114.3x60.3	2-M12x75	2065	300	101	144	180/184	107	2 3/4"	70
4x2 1/2	100x65	114.3x73	2-M12x75	2065	300	105	144	180/184	117	3 1/8"	79
4x2 1/2	100x65	114.3x76.1	2-M12x75	2065	300	105	144	180/184	117	3 1/8"	79
4x3	100x80	114.3x88.9	2-M12x75	2065	300	102.5	139	184	119	3 1/2"	89
5x1 1/4	125x32	133x42.4	2-M12x95	2065	300	111.5	162	196	80	1 3/4"	44
5x1 1/2	125x40	133x48.3	2-M12x95	2065	300	111.5	164	196	93	2 1/8"	54
5x2	125x50	133x60.3	2-M16x100	2065	300	111.5	165	213	107	2 3/4"	70
5x2 1/2	125x65	133x76.1	2-M16x100	2065	300	111.5	165	213	117	3 1/8"	79
5x3	125x80	133x88.9	2-M16x100	2065	300	111.5	165	213	129	3 1/2"	89
5x1 1/4	125x32	139.7(141.3)x42.4	2-M12x95	2065	300	115	170	203	80	1 3/4"	44
5x1 1/2	125x40	139.7(141.3)x48.3	2-M12x95	2065	300	115	172	203	93	2 1/8"	54
5x2	125x50	139.7(141.3)x60.3	2-M16x100	2065	300	115	172	220	107	2 3/4"	70
5x2 1/2	125x65	139.7(141.3)x73	2-M16x100	2065	300	119	172	220	117	3 1/8"	79
5x2 1/2	125x65	139.7(141.3)x76.1	2-M16x100	2065	300	119	172	220	117	3 1/8"	79
5x3	125x80	139.7(141.3)x88.9	2-M16x100	2065	300	119	172	220	129	3 1/2"	89
6x1 1/4	150x32	159x42.4	2-M12x95	2065	300	125.5	188	223	80	1 3/4"	44
6x1 1/2	150x40	159x48.3	2-M12x95	2065	300	125.5	192	223	97	2 1/4"	57
6x2	150x50	159x60.3	2-M16x100	2065	300	125.5	193	242	107	2 3/4"	70
6x2 1/2	150x65	159x76.1	2-M16x100	2065	300	130	193	242	117	3 1/8"	79
6x3	150x80	159x88.9	2-M16x100	2065	300	130	193	242	129	3 1/2"	89
6x4	150x100	159x108	2-M16x100	2065	300	130	193	242	152	4 1/2"	114
6x4	150x100	159x114.3	2-M16x100	2065	300	130	193	242	152	4 1/2"	114
6x1 1/4	150x32	165.1x42.4	2-M12x95	2065	300	126.5	195	229	80	1 3/4"	44
6x1 1/2	150x40	165.1x48.3	2-M12x95	2065	300	128.5	199	229	96	2 1/4"	57
6x2	150x50	165.1x60.3	2-M16x100	2065	300	128.5	199	245	107	2 3/4"	70
6x2 1/2	150x65	165.1x73	2-M16x100	2065	300	133	199	245	117	3 1/8"	79
6x2 1/2	150x65	165.1x76.1	2-M16x100	2065	300	133	199	245	117	3 1/8"	79
6x3	150x80	165.1x88.9	2-M16x100	2065	300	133	199	245	129	3 1/2"	89
6x4	150x100	165.1x108	2-M16x100	2065	300	133	199	245	152	4 1/2"	114
6x4	150x100	165.1x114.3	2-M16x100	2065	300	133	199	245	152	4 1/2"	114
6x1 1/4	150x32	168.3x42.4	2-M12x95	2065	300	128	198	232	80	1 3/4"	44
6x1 1/2	150x40	168.3x48.3	2-M12x95	2065	300	130	201	232	96	2 1/4"	57

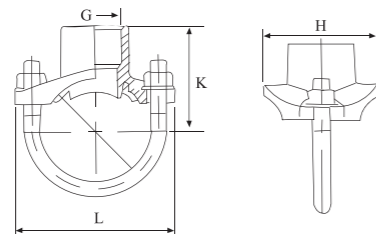
All data contained here is subject to change without notice.  
Note: Max. working pressure refers to FM registration pressure.

All data contained here is subject to change without notice.  
Note: Max. working pressure refers to FM registration pressure.

**JTECH INDUSTRIES, INC.**  
 Telephones: (+632) 668-2889 . 661-6141 . 646-5915 . 985-1843  
 Mobile: (+63917) 577-1162 . (+63908) 817-8995  
 TeleFax: (+632) 655-0273  
 Email: junagbayani@pltdsl.net . sales@jngtech.com

### XGQT3 Mechanical Tee Grooved

Nominal Size		Pipe O.D.	Bolt Size	Max. Working Pressure		Dimensions				Hole Cut Dia	
Inch	mm	mm	mm	KPa	psi	K	φ	L	H	Inch	mm
6x2	150x50	168.3x60.3	2-M16x100	2065	300	130	201	248	107	2 3/4"	70
6x2 1/2	150x65	168.3x73	2-M16x100	2065	300	134	201	248	117	3 1/8"	79
6x2 1/2	150x65	168.3x76.1	2-M16x100	2065	300	134	201	248	117	3 1/8"	79
6x3	150x80	168.3x88.9	2-M16x100	2065	300	134	201	248	129	3 1/2"	89
6x4	150x100	168.3x108	2-M16x100	2065	300	134	201	248	152	4 1/2"	114
6x4	150x100	168.3x114.3	2-M16x100	2065	300	134	201	248	152	4 1/2"	114
8x2	200x50	219.1x60.3	2-M16x110	2065	300	155.5	253	300	107	2 3/4"	70
8x2 1/2	200x65	219.1x73	2-M16x110	2065	300	160	253	300	117	3 1/8"	79
8x2 1/2	200x65	219.1x76.1	2-M16x110	2065	300	160	253	300	117	3 1/8"	79
8x3	200x80	219.1x88.9	2-M16x110	2065	300	160	253	300	129	3 1/2"	89
8x4	200x100	219.1x108	2-M16x110	2065	300	160	253	300	152	4 1/2"	114
8x4	200x100	219.1x114.3	2-M16x110	2065	300	160	253	300	152	4 1/2"	114
10x2	250x50	273x60.3	2-M20x110	1205	175	182.5	307	382	107	2 3/4"	70
10x2 1/2	250x65	273x73	2-M20x110	1205	175	186.5	307	382	117	3 1/8"	79
10x2 1/2	250x65	273x76.1	2-M20x110	1205	175	186.5	307	382	117	3 1/8"	79
10x3	250x80	273x88.9	2-M20x110	1205	175	186.5	307	382	129	3 1/2"	89
10x4	250x100	273x108	2-M20x110	1205	175	186.5	307	382	152	4 1/2"	114
10x4	250x100	273x114.3	2-M20x110	1205	175	186.5	307	382	152	4 1/2"	114

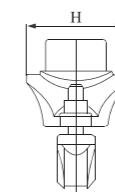
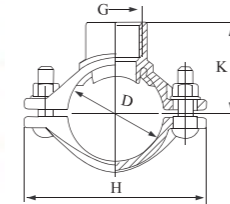


### XGQT3U Strap Tee

Nominal Size		Pipe O.D.	Bolt Size	Max. Working Pressure		Dimensions				Hole Cut Dia	
Inch	mm	mm	mm	KPa	psi	K	φ	L	H	Inch	mm
1 1/4x1/2	32x15	42.4xG1/2	2-M10X70	2065	300	42	/	90	58	1 3/16"	30.2
1 1/4x3/4	32x20	42.4xG3/4	2-M10X70	2065	300	47	/	90	58	1 3/16"	30.2
1 1/4x1	32x25	42.4xG1	2-M10X70	2065	300	54	/	90	58	1 3/16"	30.2
1 1/2x1/2	40x15	48.3xG1/2	2-M10X70	2065	300	45	/	90	58	1 3/16"	30.2
1 1/2x3/4	40x20	48.3xG3/4	2-M10X70	2065	300	50	/	90	58	1 3/16"	30.2
1 1/2x1	40x25	48.3xG1	2-M10X70	2065	300	57	/	90	58	1 3/16"	30.2

### XGQT3U Strap Tee

Nominal Size		Pipe O.D.	Bolt Size	Max. Working Pressure		Dimensions				Hole Cut Dia	
Inch	mm	mm	mm	KPa	psi	K	φ	L	H	Inch	mm
2x1/2	50x15	60.3xG1/2	2-M10X82	2065	300	51	/	97	58	1 3/16"	30.2
2x3/4	50x20	60.3xG3/4	2-M10X82	2065	300	56	/	97	58	1 3/16"	30.2
2x1	50x25	60.3xG1	2-M10X82	2065	300	63	/	97	58	1 3/16"	30.2
2 1/2Ax1/2	65x15	73xG1/2	2-M10X95	2065	300	57.5	/	114	58	1 3/16"	30.2
2 1/2Ax3/4	65x20	73xG3/4	2-M10X95	2065	300	62.5	/	114	58	1 3/16"	30.2
2 1/2Ax1	65x25	73xG1	2-M10X95	2065	300	69.5	/	114	58	1 3/16"	30.2
2 1/2x1/2	65x15	76.1xG1/2	2-M10X95	2065	300	59	/	114	58	1 3/16"	30.2
2 1/2x3/4	65x20	76.1xG3/4	2-M10X95	2065	300	64	/	114	58	1 3/16"	30.2
2 1/2x1	65x25	76.1xG1	2-M10X95	2065	300	71	/	114	58	1 3/16"	30.2

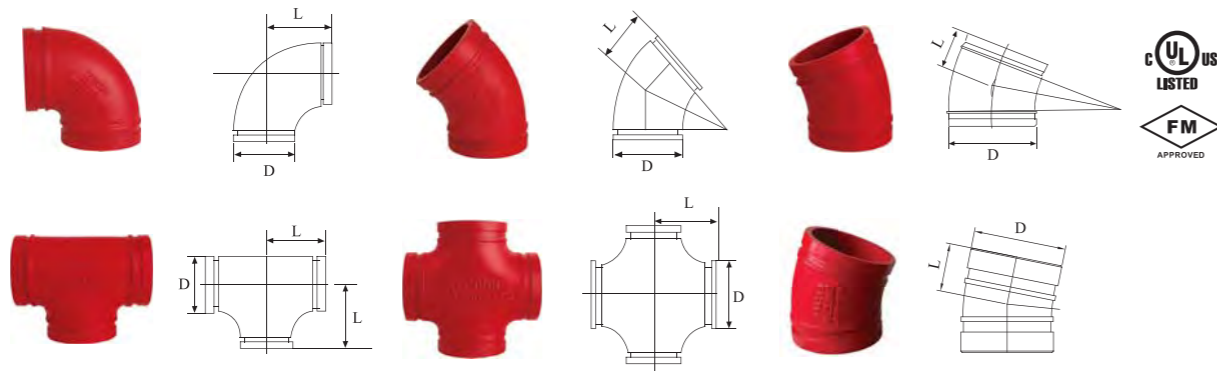


### XGQT3D Branch Outlet

Nominal Size		Pipe O.D.	Bolt Size	Max. Working Pressure		Dimensions				Hole Cut Dia	
Inch	mm	mm	mm	KPa	psi	K	φ	L	H	Inch	mm
1x1/2	25x15	33.7xG1/2	2-M10X35	2065	300	40.5	51	91	52	1 3/16"	20.6
1 1/4x1/2	32x15	42.4xG1/2	2-M10X35	2065	300	43.5	55	100	66	1 3/16"	30.2
1 1/4x3/4	32x20	42.4xG3/4	2-M10X35	2065	300	43.5	55	100	66	1 3/16"	30.2
1 1/4x1	32x25	42.4xG1	2-M10X35	2065	300	51	55	100	66	1 3/16"	30.2
1 1/2x1/2	40x15	48.3xG1/2	2-M10X35	2065	300	46	64	105	66	1 3/16"	30.2
1 1/2x3/4	40x20	48.3xG3/4	2-M10X35	2065	300	48	64	105	66	1 3/16"	30.2
1 1/2x1	40x25	48.3xG1	2-M10X35	2065	300	53.5	64	105	66	1 3/16"	30.2
2x1/2	50x15	60.3xG1/2	2-M10X35	2065	300	52	76	120	66	1 3/16"	30.2
2x3/4	50x20	60.3xG3/4	2-M10X35	2065	300	54	76	120	66	1 3/16"	30.2
2x1	50x25	60.3xG1	2-M10X35	2065	300	59.5	76	120	66	1 3/16"	30.2
2 1/2Ax1/2	65x15	73xG1/2	2-M10X35	2065	300	58.5	89	133	66	1 3/16"	30.2
2 1/2Ax3/4	65x20	73xG3/4	2-M10X35	2065	300	60.5	89	133	66	1 3/16"	30.2
2 1/2Ax1	65x25	73xG1	2-M10X35	2065	300	66	89	133	66	1 3/16"	30.2
2 1/2x1/2	65x15	76.1xG1/2	2-M10X35	2065	300	60	92	136	66	1 3/16"	30.2
2 1/2x3/4	65x20	76.1xG3/4	2-M10X35	2065	300	62	92	136	66	1 3/16"	30.2
2 1/2x1	65x25	76.1xG1	2-M10X35	2065	300	67.5	92	136	66	1 3/16"	30.2

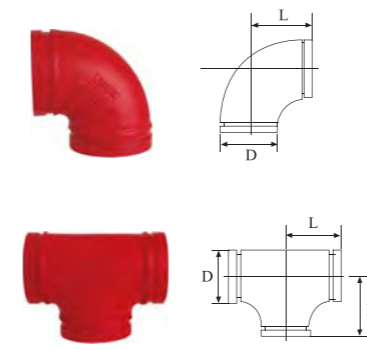
All data contained here is subject to change without notice.  
Note: Max. working pressure refers to FM registration pressure.

All data contained here is subject to change without notice.  
Note: Max. working pressure refers to FM registration pressure.



**Standard Elbow, Tee, Cross**

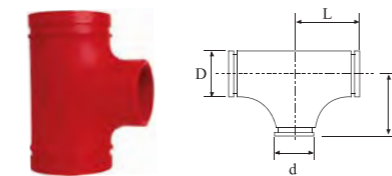
Nominal Size		Pipe O.D.	Max. Working Pressure		XGQT01 90° Elbow L	XGQT02 45° Elbow L	XGQT10 22.5° Elbow L	XGQT20 11.25° Elbow L	XGQT03 Tee L	XGQT05 Cross L
Inch	mm	mm	KPa	psi	mm	mm	mm	mm	mm	mm
1	25	33.7	2065	300	57	44	44		57	57
1 1/4	32	42.4	2065	300	70	45	45		70	70
1 1/2	40	48.3	2065	300	70	45	45		70	70
2	50	57	2065	300	84	55	47.5		84	84
2	50	60.3	2065	300	84	55	47.5	35	84	84
2 1/2	65	73	2065	300	90	60	51	38	90	90
2 1/2	65	76.1	2065	300	90	60	51	38	90	90
3	80	88.9	2065	300	94	65	57	38	94	94
4	100	108	2065	300	104	80	67	44	104	104
4	100	114.3	2065	300	104	80	67	44	104	104
5	125	133	2065	300	122	90	73	51	122	122
5	125	139.7	2065	300	122	90	73	51	122	122
5	125	141.3	2065	300	122	90	73	51	122	122
6	150	159	2065	300	142	95	79	51	142	142
6	150	165.1	2065	300	142	95	79	51	142	142
6	150	168.3	2065	300	142	95	79	51	142	142
8	200	219.1	2065	300	179	124	98.5	51	179	179
10	250	273	1205	175	215	144	111	54	215	215
12	300	325	1205	175	245	147	124		245	245
12	300	323.9	1205	175	245	147	124	57	245	245
14	350	377	1205	175	356	147			305	305
14	350	355.6								
16	400	426	1205	175	406	168			328	328
16	400	406.4								
18	450	480	1205	175	457	190			359	359
18	450	457.2								
20	500	530	1205	175	508	210			387	387
20	500	508								
24	600	630	1205	175	610	253			441	441



**Short Radius Elbow, Tee**



Nominal Size		Pipe O.D.	Max. Working Pressure		XGQT01D 90° Elbow L	XGQT03D Tee L
Inch	mm	mm	KPa	psi	mm	mm
1	25	33.7	2065	300	57	57
1 1/4	32	42.4	2065	300	57	57
1 1/2	40	48.3	2065	300	70	70
2	50	60.3	2065	300	70	70
2 1/2	65	73	2065	300	76	76
2 1/2	65	76.1	2065	300	76	76
3	80	88.9	2065	300	86	86
4	100	108	2065	300	102	102
4	100	114.3	2065	300	102	102
5	125	133	2065	300	124	124
5	125	139.7	2065	300	124	124
5	125	141.3	2065	300	124	124
6	150	159	2065	300	140	140
6	150	165.1	2065	300	140	140
6	150	168.3	2065	300	140	140
8	200	219.1	2065	300	173	173



**XGQT04 Reducing Tee**

Nominal Size		Pipe O.D.	Max. Working Pressure		L
Inch	mm	mm	KPa	psi	mm
2x1	50x25	60.3xG1	2065	300	84
2x1 1/4	50x32	60.3xG1 1/4	2065	300	84
2x1 1/2	50x40	60.3xG1 1/2	2065	300	84
2 1/2x2	65x50	73x60.3	2065	300	90
2 1/2x2	65x50	76.1xG2	2065	300	90
2 1/2x2	65x50	76.1x60.3	2065	300	90
3x2	80x50	88.9xG2	2065	300	94
3x2	80x50	88.9x60.3	2065	300	94
3x2 1/2	80x65	88.9x73	2065	300	94

Nominal Size		Pipe O.D.	Max. Working Pressure		L
Inch	mm	mm	KPa	psi	mm
3x2 1/2	80x65	88.9xG2 1/2	2065	300	94
3x2 1/2	80x65	88.9x76.1	2065	300	94
4x2	100x50	108x60	2065	300	104
4x2 1/2	100x65	108x76.1	2065	300	104
4x2 1/2	100x65	108xG2 1/2	2065	300	104
4x3	100x80	108xG3	2065	300	104
4x3	100x80	108x88.9	2065	300	104
4x2	100x50	114.3x60.3	2065	300	104
4x2 1/2	100x65	114.3x73	2065	300	104
4x2 1/2	100x65	114.3xG2 1/2	2065	300	104
4x2 1/2	100x65	114.3x76.1	2065	300	104
4x3	100x80	114.3xG3	2065	300	104
4x3	100x80	114.3x88.9	2065	300	104
5x2 1/2	125x65	133x76.1	2065	300	122
5x3	125x80	133x88.9	2065	300	122
5x4	125x100	133x108	2065	300	122
5x4	125x100	133x114.3	2065	300	122

**XGQT04**  
Reducing Tee

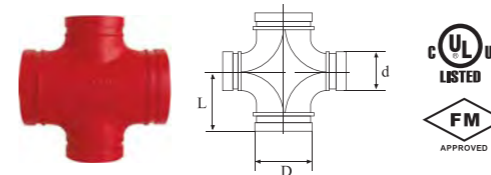
Nominal Size		Pipe O.D.	Max.Working Pressure		L
Inch	mm	mm	KPa	psi	mm
5x2 1/2	125x65	139.7x76.1	2065	300	122
5x3	125x80	139.7x88.9	2065	300	122
5x4	125x100	139.7x108	2065	300	122
5x4	125x100	139.7x114.3	2065	300	122
5x2 1/2	125x65	141.3x73	2065	300	122
5x3	125x80	141.3x88.9	2065	300	122
5x4	125x100	141.3x114.3	2065	300	122
6x2	150x50	159x60.3	2065	300	142
6x2 1/2	150x65	159xG2 1/2	2065	300	142
6x2 1/2	150x65	159x76.1	2065	300	142
6x3	150x80	159xG3	2065	300	142
6x3	150x80	159x89	2065	300	142
6x4	150x100	159x108	2065	300	142
6x4	150x100	159x114.3	2065	300	142
6x5	150x125	159x133	2065	300	142
6x5	150x125	159x139.7	2065	300	142
6x2	150x50	165.1x60.3	2065	300	142
6x2 1/2	150x65	165.1xG2 1/2	2065	300	142
6x2 1/2	150x65	165.1x76.1	2065	300	142
6x3	150x80	165.1xG3	2065	300	142
6x3	150x80	165.1x88.9	2065	300	142
6x4	150x100	165.1x108	2065	300	142
6x4	150x100	165.1x114.3	2065	300	142
6x5	150x125	165.1x133	2065	300	142
6x5	150x125	165.1x139.7	2065	300	142
6x2	150x50	168.3x60.3	2065	300	142
6x2 1/2	150x65	168.3x73	2065	300	142
6x2 1/2	150x65	168.3x76	2065	300	142
6x3	150x80	168.3x88.9	2065	300	142
6x4	150x100	168.3x108	2065	300	142
6x4	150x100	168.3x114.3	2065	300	142
6x5	150x125	168.3x133	2065	300	142
6x5	150x125	168.3x139.7	2065	300	142
6x5	150x125	168.3x141.3	2065	300	142
8x3	200x80	219.1x88.9	2065	300	179
8x4	200x100	219.1x108	2065	300	179
8x4	200x100	219.1x114.3	2065	300	179

**XGQT04**  
Reducing Tee

Nominal Size		Pipe O.D.	Max.Working Pressure		L
Inch	mm	mm	KPa	psi	mm
8x5	200x125	219.1x133	2065	300	179
8x5	200x125	219.1x139.7	2065	300	179
8x5	200x125	219.1x141.3	2065	300	179
8x6	200x150	219.1x159	2065	300	179
8x6	200x150	219.1x165.1	2065	300	179
8x6	200x150	219.1x168.3	2065	300	179
10x4	250x100	273x108	1205	175	215
10x4	250x100	273x114.3	1205	175	215
10x5	250x125	273x133	1205	175	215
10x5	250x125	273x139.7	1205	175	215
10x6	250x150	273x159	1205	175	215
10x6	250x150	273x165.1	1205	175	215
10x6	250x150	273x168.3	1205	175	215
10x8	250x200	273x219.1	1205	175	215
12x4	300x100	323.9x108	1205	175	245
12x4	300x100	323.9x114.3	1205	175	245
12x5	300x125	323.9x133	1205	175	245
12x5	300x125	323.9x139.7	1205	175	245
12x6	300x150	323.9x159	1205	175	245
12x6	300x150	323.9x165.1	1205	175	245
12x6	300x150	323.9x168.3	1205	175	245
12x8	300x200	323.9x219.1	1205	175	245
12x10	300x250	323.9x273	1205	175	245
14x6	350x150	377x159	1205	175	305
14x6	350x150	377x165.1	1205	175	305
14x8	350x200	377x219.1	1205	175	305
14x10	350x250	377x273	1205	175	305
14x12	350x300	377x323.9	1205	175	305
16x8	400x200	426x219.1	1205	175	328
16x10	400x250	426x273	1205	175	328
16x12	400x300	426x323.9	1205	175	328
16x14	400x350	426x377	1205	175	328
18x8	450x200	480x219.1	1205	175	359
18x10	450x250	480x273	1205	175	359
18x12	450x300	480x323.9	1205	175	359
18x14	450x350	480x377	1205	175	359
20x8	500x200	530x219.1	1205	175	387

**XGQT04**  
Reducing Tee

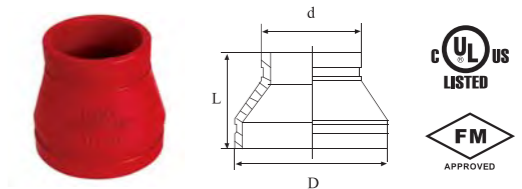
Nominal Size		Pipe O.D.	Max.Working Pressure		L
Inch	mm	mm	KPa	psi	mm
20x10	500x250	530x273	1205	175	387
20x12	500x300	530x323.9	1205	175	387
20x16	500x400	530x426	1205	175	387
24x16	600x400	630x426	1205	175	441
24x18	600x450	630x480	1205	175	441



**XGQT05**  
Reducing Cross

Nominal Size		Pipe O.D.	Max.Working Pressure		L
Inch	mm	mm	KPa	psi	mm
2 1/2 x 2	65 x 50	76.1x60.3	2065	300	90
2 1/2 x 2	65 x 50	76.1xG2	2065	300	90
3 x 2	80 x 50	88.9x60.3	2065	300	94
3 x 2	80 x 50	88.9xG2	2065	300	94
3 x 2 1/2	80 x 65	88.9x76.1	2065	300	94
3 x 2 1/2	80 x 65	88.9xG2 1/2	2065	300	94
4 x 2	100 x 50	108x60.3	2065	300	104
4 x 2	100 x 50	108xG2	2065	300	104
4 x 2 1/2	100 x 65	108x76.1	2065	300	104
4 x 2 1/2	100 x 65	108xG2 1/2	2065	300	104
4 x 3	100 x 80	108x88.9	2065	300	104
4 x 3	100 x 80	108xG3	2065	300	104
4 x 2	100 x 50	114.3x60.3	2065	300	104
4 x 2	100 x 50	114.3xG2	2065	300	104
4 x 2 1/2	100 x 65	114.3x76.1	2065	300	104
4 x 2 1/2	100 x 65	114.3xG2 1/2	2065	300	104
4 x 3	100 x 80	114.3x88.9	2065	300	104
4 x 3	100 x 80	114.3xG3	2065	300	104
5 x 3	125 x 80	139.7x88.9	2065	300	122
5 x 4	125 x 100	139.7x114.3	2065	300	122
6 x 4	150 x 100	159x108	2065	300	142

Nominal Size		Pipe O.D.	Max.Working Pressure		L
Inch	mm	mm	KPa	psi	mm
6 x 4	150 x 100	159x114.3	2065	300	142
6 x 5	150 x 125	159x133	2065	300	142
6 x 5	150 x 125	159x139.7	2065	300	142
6 x 2 1/2	150 x 65	165.1x76.1	2065	300	142
6 x 3	150 x 80	165.1x88.9	2065	300	142
6 x 4	150 x 100	165.1x114.3	2065	300	142
6 x 5	150 x 125	165.1x139.7	2065	300	142
6 x 2	150 x 50	168.3 x 60.3	2065	300	142
6 x 2 1/2	150 x 65	168.3x76.1	2065	300	142
6 x 3	150 x 80	168.3x88.9	2065	300	142
6 x 4	150 x 100	168.3x114.3	2065	300	142
6 x 5	150 x 125	168.3x139.7	2065	300	142
8 x 4	150 x 100	219.1x114.3	2065	300	179
8 x 5	200 x 125	219.1x133	2065	300	179
8 x 5	200 x 125	219.1x139.7	2065	300	179
8 x 6	200 x 150	219.1x159	2065	300	179
8 x 6	200 x 150	219.1x165.1	2065	300	179
10 x 6	250 x 150	273x159	1205	175	215
10 x 6	250 x 150	273x165.1	1205	175	215
10 x 8	250 x 200	273x219.1	1205	175	215



**XGQT07**  
Reducer Grooved

Nominal Size		Pipe O.D.	Max.Working Pressure		L
Inch	mm	mm	KPa	psi	mm
1 1/4x1	32x25	42.4x33.7	2065	300	64
1 1/2x1	40x25	48.3x33.7	2065	300	64
1 1/2x1 1/4	40x32	48.3x42.4	2065	300	64
2x1	50x25	60.3x33.7	2065	300	90
2x1 1/4	50x32	60.3x42.4	2065	300	90
2x1 1/2	50x40	60.3x48.3	2065	300	90

All data contained here is subject to change without notice.  
Note: Max. working pressure refers to FM registration pressure.

All data contained here is subject to change without notice.  
Note: Max. working pressure refers to FM registration pressure.

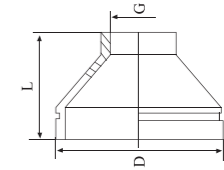
**XGQT07  
Reducer Grooved**

Nominal Size		Pipe O.D.	Max.Working Pressure		L
Inch	mm	mm	MPa	psi	mm
2 1/2x1 1/4	65x32	73x42.4	2065	300	90
2 1/2x1 1/2	65x40	73x48.3	2065	300	90
2 1/2x1	65x25	76.1x33.7	2065	300	90
2 1/2x1 1/4	65x32	76.1x42.4	2065	300	90
2 1/2x1 1/2	65x40	76.1x48.3	2065	300	90
2 1/2x2	65x50	76.1x60.3	2065	300	90
3x1	80x25	88.9x33.7	2065	300	90
3x1 1/4	80x32	88.9x42.4	2065	300	90
3x1 1/2	80x40	88.9x48.3	2065	300	90
3x2	80x50	88.9x76.1	2065	300	90
3x2 1/2	80x65	88.9x73	2065	300	90
4x2	100x50	108x60.3	2065	300	102
4x2	100x50	108x76.1	2065	300	102
4x3	100x80	108x88.9	2065	300	102
4x1 1/4	100x32	114.3x42.4	2065	300	102
4x1 1/2	100x40	114.3x48.3	2065	300	102
4x2	100x50	114.3x60.3	2065	300	102
4x2 1/2	100x65	114.3x73	2065	300	102
4x2 1/2	100x65	114.3x76.1	2065	300	102
4x3	100x80	114.3x88.9	2065	300	102
5x2 1/2	125x65	133x76.1	2065	300	102
5x3	125x80	133x88.9	2065	300	102
5x4	125x100	133x108	2065	300	102
5x4	125x100	133x114.3	2065	300	102
5x2	125x50	139.7x60.3	2065	300	102
5x2 1/2	125x65	139.7x76.1	2065	300	102
5x3	125x80	139.7x88.9	2065	300	102
5x4	125x100	139.7x108	2065	300	102
5x4	125x100	139.7x114.3	2065	300	102
5x2	125x50	141.3x60.3	2065	300	102
5x2 1/2	125x65	141.3x73	2065	300	102
5x3	125x80	141.3x88.9	2065	300	102
5x4	125x100	141.3x114.3	2065	300	102
6x2 1/2	150x65	159x76.1	2065	300	102
6x3	150x80	159x88.9	2065	300	102
6x4	150x100	159x108	2065	300	102
6x4	150x100	159x114.3	2065	300	102

Nominal Size		Pipe O.D.	Max.Working Pressure		L
Inch	mm	mm	MPa	psi	mm
6x5	150x125	159x133	2065	300	102
6x5	150x125	159x139.7	2065	300	102
6x2	150x50	165.1x60.3	2065	300	102
6x2 1/2	150x65	165.1x76.1	2065	300	102
6x3	150x80	165.1x88.9	2065	300	102
6x4	150x100	165.1x108	2065	300	102
6x4	150x100	165.1x114.3	2065	300	102
6x5	150x125	165.1x133	2065	300	102
6x5	150x125	165.1x139.7	2065	300	102
6x2	150x50	168.3x60.3	2065	300	102
6x2 1/2	150x65	168.3x73	2065	300	102
6x2 1/2	150x65	168.3x76.1	2065	300	102
6x3	150x80	168.3x88.9	2065	300	102
6x4	150x100	168.3x108	2065	300	102
6x4	150x100	168.3x114.3	2065	300	102
6x5	150x125	168.3x133	2065	300	102
6x5	150x125	168.3x139.7	2065	300	102
6x5	150x125	168.3x141.3	2065	300	102
8x2 1/2	200x65	219.1x73	2065	300	127
8x2 1/2	200x65	219.1x76.1	2065	300	127
8x3	200x80	219.1x88.9	2065	300	127
8x4	200x100	219.1x108	2065	300	127
8x4	200x100	219.1x114.3	2065	300	127
8x5	200x125	219.1x133	2065	300	127
8x5	200x125	219.1x139.7	2065	300	127
8x5	200x125	219.1x141.3	2065	300	127
8x6	200x150	219.1x159	2065	300	127
8x6	200x150	219.1x165.1	2065	300	127
8x6	200x150	219.1x168.3	2065	300	127
10x4	250x100	273x108	1205	175	152
10x4	250x100	273x114.3	1205	175	152
10x5	250x125	273x133	1205	175	152
10x5	250x125	273x139.7	1205	175	152
10x6	250x150	273x159	1205	175	152
10x6	250x150	273x168.3	1205	175	152
10x6	250x150	273x165.1	1205	175	152
10x8	150x200	273x219.1	1205	175	152

**XGQT07  
Reducer Grooved**

Nominal Size		Pipe O.D.	Max.Working Pressure		L
Inch	mm	mm	KPa	psi	mm
12x4	300x100	323.9x108	1205	175	178
12x4	300x100	323.9x114.3	1205	175	178
12x5	300x125	323.9x133	1205	175	178
12x5	300x125	323.9x139.7	1205	175	178
12x6	300x150	323.9x159	1205	175	178
12x6	300x150	323.9x165.1	1205	175	178
12x6	300x150	323.9x168.3	1205	175	178
12x8	300x200	323.9x219.1	1205	175	178
12x10	300x250	323.9x273	1205	175	178
14x6	350x150	377x159	1205	175	330
14x6	350x150	377x165.1	1205	175	330
14x6	350x150	377x168.3	1205	175	330
14x8	350x200	377x219.1	1205	175	330
14x10	350x250	377x273	1205	175	330
14x12	350x300	377x323.9	1205	175	330
16x8	400x200	426x219.1	1205	175	356
16x10	400x250	426x273	1205	175	356
16x12	400x300	426x323.9	1205	175	356
16x14	400x350	426x377	1205	175	356
18x10	450x250	480x273	1205	175	388
18x12	450x300	480x323.9	1205	175	388
18x14	450x350	480x377	1205	175	388
18x16	450x400	480x426	1205	175	388
20x10	500x250	530x273	1205	175	508
20x12	500x300	530x323.9	1205	175	508
20x14	500x350	530x377	1205	175	508
20x16	500x400	530x426	1205	175	508
20x18	500x350	530x480	1205	175	508
24x14	600x350	630x377	1205	175	508
24x16	600x400	630x426	1205	175	508
24x18	600x450	630x480	1205	175	508
24x20	600x500	630x530	1205	175	508



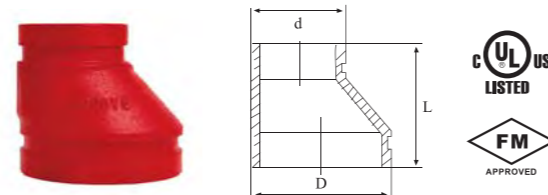
**XGQT07  
Reducer Threaded**

Nominal Size		Pipe O.D.	Max.Working Pressure		L
Inch	mm	mm	KPa	psi	mm
2x3/4	50x20	60.3xG3/4	2065	300	90
2x1/2	50x15	60.3xG1/2	2065	300	90
2x1	50x25	60.3xG1	2065	300	90
2x1 1/4	50x32	60.3xG1 1/4	2065	300	90
2x1 1/2	50x40	60.3xG1 1/2	2065	300	90
2 1/2x1	65x25	73xG1	2065	300	90
2 1/2x1 1/4	65x32	73xG1 1/4	2065	300	90
2 1/2x1 1/2	65x40	73xG1 1/2	2065	300	90
2 1/2xG2	65x50	73xG2	2065	300	90
2 1/2x1/2	65x15	76.1xG1/2	2065	300	90
2 1/2x3/4	65x20	76.1xG3/4	2065	300	90
2 1/2x1	65x25	76.1xG1	2065	300	90
2 1/2x1 1/4	65x32	76.1xG1 1/4	2065	300	90
2 1/2x1 1/2	65x40	76.1xG1 1/2	2065	300	90
2 1/2x2	65x50	76.1xG2	2065	300	90
3x1/2	80x15	88.9xG1/2	2065	300	90
3x3/4	80x20	88.9xG3/4	2065	300	90
3x1	80x25	88.9xG1	2065	300	90
3x1 1/4	80x32	88.9xG1 1/4	2065	300	90
3x1 1/2	80x40	88.9xG1 1/2	2065	300	90
3x2	80x50	88.9xG2	2065	300	90
3x2 1/2	80x65	88.9xG2 1/2	2065	300	90
4x1	100x25	108xG1	2065	300	102
4x1 1/4	100x32	108xG1 1/4	2065	300	102
4x1 1/2	100x40	108xG1 1/2	2065	300	102
4x2	100x50	108xG2	2065	300	102
4x2 1/2	100x65	108xG2 1/2	2065	300	102
4x3	100x80	108xG3	2065	300	102
4x1/2	100x15	114.3xG1/2	2065	300	102
4x3/4	100x20	114.3xG3/4	2065	300	102

**XGQT07**  
Reducer Threaded

Nominal Size		Pipe O.D.	Max.Working Pressure		L
Inch	mm	mm	KPa	psi	mm
4x1	100x25	114.3xG1	2065	300	102
4x1 1/4	100x32	114.3xG1 1/4	2065	300	102
4x1 1/2	100x40	114.3xG1 1/2	2065	300	102
4x2	100x50	114.3xG2	2065	300	102
4x2 1/2	100x65	114.3xG2 1/2	2065	300	102
4x3	100x80	114.3xG3	2065	300	102
5x1	125x25	133xG1	2065	300	102
5x1 1/4	125x32	133xG1 1/4	2065	300	102
5x1 1/2	125x40	133xG1 1/2	2065	300	102
5x2	125x50	133xG2	2065	300	102
5xG2 1/2	125x65	133xG2 1/2	2065	300	102
5xG3	125x80	133xG3	2065	300	102
5x1	125x25	139.7xG1	2065	300	102
5x1 1/4	125x32	139.7xG1 1/4	2065	300	102
5x1 1/2	125x40	139.7xG1 1/2	2065	300	102
5x2	125x50	139.7xG2	2065	300	102
5x2 1/2	125x65	139.7xG2 1/2	2065	300	102
5x3	125x80	139.7xG3	2065	300	102
5x1	125x25	141.3xG1	2065	300	102
5x1 1/4	125x32	141.3xG1 1/4	2065	300	102
5x1 1/2	125x40	141.3xG1 1/2	2065	300	102
6x1	150x25	159xG1	2065	300	102
6x1 1/4	150x32	159xG1 1/4	2065	300	102
6x1 1/2	150x40	159xG1 1/2	2065	300	102
6x2	150x50	159xG2	2065	300	102
6x2 1/2	150x65	159xG2 1/2	2065	300	102
6x3	150x80	159xG3	2065	300	102
6x1	150x25	165.1xG1	2065	300	102
6x1 1/4	150x32	165.1xG1 1/4	2065	300	102
6x1 1/2	150x40	165.1xG1 1/2	2065	300	102
6x2	150x50	165.1xG2	2065	300	102
6x2 1/2	150x65	165.1xG2 1/2	2065	300	102
6x3	150x80	165.1xG3	2065	300	102
6x1	150x25	168.3xG1	2065	300	102
6x1 1/4	150x32	168.3xG1 1/4	2065	300	102
6x1 1/2	150x40	168.3xG1 1/2	2065	300	102
6x2	150x50	168.3xG2	2065	300	102

Nominal Size		Pipe O.D.	Max.Working Pressure		L
Inch	mm	mm	KPa	psi	mm
6x2 1/2	150x65	168.3xG2 1/2	2065	300	102
6x3	150x80	168.3xG3	2065	300	102
8x1	200x25	219.1xG1	2065	300	127
8x1 1/4	200x32	219.1xG1 1/4	2065	300	127
8x1 1/2	200x40	219.1xG1 1/2	2065	300	127
8x2	200x50	219.1xG2	2065	300	127
8x2 1/2	200x65	219.1xG2 1/2	2065	300	127
8x3	200x80	219.1xG3	2065	300	127

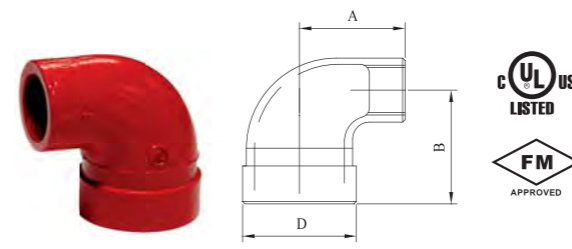


**XGQT07P**  
Eccentric Reducer

Nominal Size		Pipe O.D.	Max.Working Pressure		L
Inch	mm	mm	KPa	psi	mm
3x2	80x50	88.9x60.3	2065	300	90
3x2 1/2	80x65	88.9x76.1	2065	300	90
4x2 1/2	100x65	108x76.1	2065	300	102
4x3	100x80	108x88.9	2065	300	102
4x2 1/2	100x65	114.3x76.1	2065	300	102
4x3	100x80	114.3x88.9	2065	300	102
5x4	125x100	133x108	2065	300	102
6x2 1/2	150x65	159x76.1	2065	300	102
6x3	150x80	159x88.9	2065	300	102
6x4	150x100	159x108	2065	300	102
6x4	150x100	159x114.3	2065	300	102
6x5	150x125	159x133	2065	300	102
6x2 1/2	150x65	165.1x76.1	2065	300	102
6x3	150x80	165.1x88.9	2065	300	102
6x4	150x100	165.1x114.3	2065	300	102

**XGQT07P**  
Eccentric Reducer

Nominal Size		Pipe O.D.	Max.Working Pressure		L
Inch	mm	mm	KPa	psi	mm
8x4	200x100	219.1x108	2065	300	127
8x4	200x100	219.1x114.3	2065	300	127
8x6	200x150	219.1x159	2065	300	127
8x6	200x150	219.1x165.1	2065	300	127
10x6	250x150	273x165.1	1205	175	152
10x8	250x200	273x219.1	1205	175	152

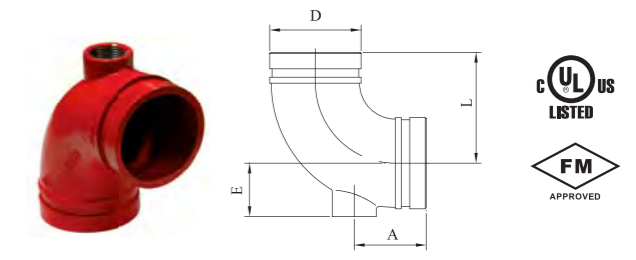


**01**  
Reducing End-line Elbow

Nominal Size		Pipe O.D.	Max.Working Pressure		A	B
inch	mm	mm	KPa	psi	mm	mm
1x1/2	25x15	33.7xG1/2	2065	300	44.5	48
1 1/4x1/2	32x15	42.4xG1/2	2065	300	44.5	48
1 1/4x3/4	32x20	42.4xG3/4	2065	300	44.5	48
1 1/4x1	32x25	42.4xG1	2065	300	50.8	51.3
1 1/2x1/2	40x15	48.3xG1/2	2065	300	44.5	48
1 1/2x3/4	40x20	48.3xG3/4	2065	300	44.5	48
1 1/2x1	40x25	48.3xG1	2065	300	50.8	51.3
2x1/2	50x15	60.3xG1/2	2065	300	44.5	48
2x3/4	50x20	60.3xG3/4	2065	300	44.5	48
2x1	50x25	60.3xG1	2065	300	50.8	51.3
2 1/2x1/2	65x15	73xG1/2	2065	300	50	48
2 1/2x3/4	65x20	73xG3/4	2065	300	50	48
2 1/2x1	65x25	73xG1	2065	300	50.8	51.3
2 1/2x1/2	65x15	76.1xG1/2	2065	300	50	48

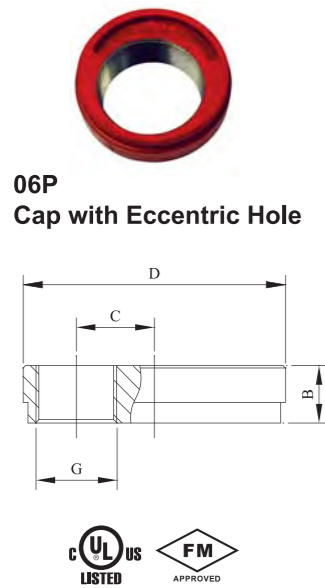
**01**  
Reducing End-line Elbow

Nominal Size		Pipe OD	Max.Working Pressure		A	B
inch	mm	mm	KPa	psi	mm	mm
2 1/2x3/4	65x20	76.1xG3/4	2065	300	50	48
2 1/2x1	65x25	76.1xG1	2065	300	52	51.3



**XGQT01P**  
Drain Elbow

Nominal Size		Pipe OD	Max.Working Pressure		L	A	E
inch	mm	mm	KPa	psi	mm	mm	mm
2x1	50x25	60.3xG1	2065	300	83	70	36
2-1/2x1	65x25	73xG1	2065	300	95	70	44
3x1	80x25	88.9xG1	2065	300	108	70	52
4x1	100x25	114.3xG1	2065	300	127	70	64
5x1	125x25	141.3xG1	2065	300	140	70	78
6x1	150x25	168.3xG1	2065	300	165	70	91
8x1	200x25	219.1xG1	2065	300	197	70	118



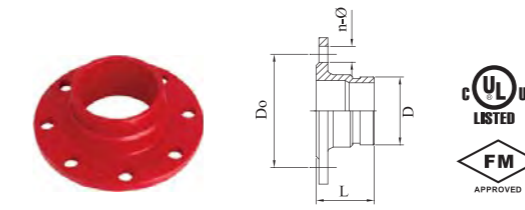
**06P**  
Cap with Eccentric Hole

Nominal Size		Pipe O.D.		Max. Working Pressure		Eccentricity C mm				B
Inch	mm	mm	KPa	psi	1	1-1/4	1-1/2	2	mm	
2	50	60.3	2065	300	9	5	0		25	
2-1/2	65	73	2065	300	15	10	7		25	
2-1/2	65	76.1	2065	300	16	12	9	3	25	
3	80	88.9	2065	300	22	18	15	9	25	
4	100	114.3	2065	300	35	31	28	22	25	
5	125	139.7	2065	300	48	43	40	34	25	
5	125	141.3	2065	300	47	44	41	34	25	
6	150	165.1	2065	300	60	56	53	47	25	
6	150	168.3	2065	300	61	57	54	48	25	
8	200	219.1	2065	300	84	82	79	73	31	
10	250	273	1205	175	112	107	104	98	31	

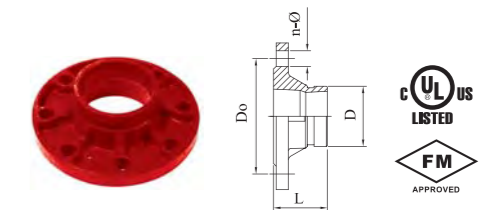


**XGQT06**  
End Cap

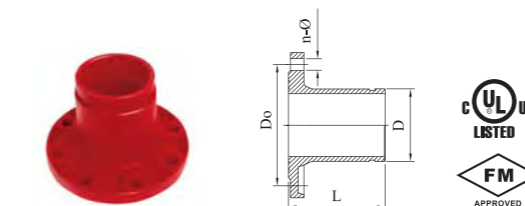
Nominal Size		Pipe O.D.		Max. Working Pressure		H
Inch	mm	mm	KPa	psi	mm	
2	50	57	2065	300	25	
2	50	60.3	2065	300	25	
2-1/2	65	73	2065	300	25	
2-1/2	65	76.1	2065	300	25	
3	80	88.9	2065	300	25	
4	100	108	2065	300	25	
4	100	114.3	2065	300	25	
5	125	133	2065	300	25	
5	125	139.7	2065	300	25	
5	125	141.3	2065	300	25	
6	150	159	2065	300	25	
6	150	165.1	2065	300	25	
6	150	168.3	2065	300	25	
8	200	219.1	2065	300	32	
10	250	273	1205	175	32	
12	300	325	1205	175	32	
12	300	323.9	1205	175	32	
14	350	377	1205	175	40	
16	400	426	1205	175	40	
18	450	480	1205	175	40	
20	500	530	1205	175	40	
24	600	630	1205	175	40	



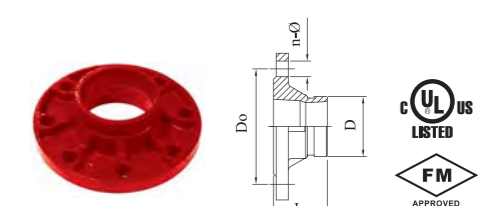
**08A-T-E**  
Grooved Flange Table E



**ANSI150 XGQT08D**  
Grooved Flange ANSI150



**ANSI150 XGQT08**  
Grooved Flange ANSI150



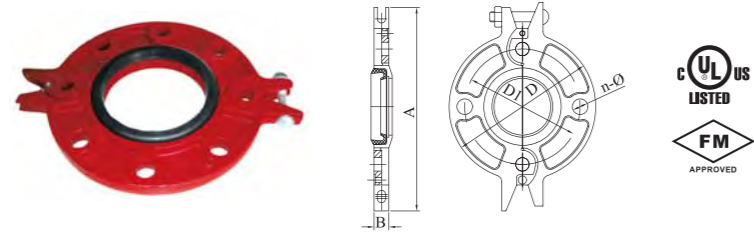
**XGQT08**  
Grooved Flange PN16



Nominal Size	Pipe O.D.	Max. Working Pressure	Dimensions											
			ANSI150				PN16			Table E				
			n*φ	Do	L		n*φ	Do	L	n*φ	Do	L		
Inch	mm	mm	psi	mm	mm	XGQT08	XGQT08D	mm	mm	mm	mm	mm	mm	
2	50	57	500						4-18	125	65			
2	50	60.3	500	4-19	121	102	65		4-18	125	65	4-18	114	65
2-1/2	65	73	500	4-19	140	102	65		4-18	178	65			
2-1/2	65	76.1	500						4-18	145	65	4-18	127	65
3	80	88.9	500	4-19	153	102	65		8-18	160	65	4-18	146	65
4	100	108	500						8-18	180	70			
4	100	114.3	500	8-22	191	102	70		8-18	180	70	8-18	178	70
5	125	133	500						8-18	210	70			
5	125	139.7	500						8-18	210	70	8-18	210	70
5	125	141.3	500	8-22	216	152	70		8-23	216	70			
6	150	159	500						8-23	240	70			
6	150	165.1	500						8-23	240	70	8-23	235	70
6	150	168.3	500	8-22	241	152	70		8-23	240	70			
8	200	219.1	300	8-22	298	152	80		12-23	295	80	8-23	292	80
10	250	273	300	12-25	362	203	85		12-25	355	85	12-23	356	85
12	300	323.9	300	12-25	432	203	90		12-25	410	90	12-27	406	90
12	300	325	300						12-25	410	90			
14	350	377	300						16-25	470	100			
16	400	426	300						16-30	525	110			
18	450	480	300						20-30	585	115			
20	500	530	300						20-34	650	125			
24	600	630	300						20-41	770	135			

All data contained here is subject to change without notice. Note: Max. working pressure refers to FM registration pressure.

**JTECH INDUSTRIES, INC.**  
 Telephones: (+632) 668-2889 . 661-6141 . 646-5915 . 985-1843  
 Mobile: (+63917) 577-1162 . (+63908) 817-8995  
 TeleFax: (+632) 655-0273  
 Email: junagbayani@pltdtdsl.net . sales@jntech.com



**XGQT08B**  
Hinged Flange Adapter

Nominal Size		Pipe O.D.	Max.Working Pressure	Dimensions				
Inch	mm	mm	psi	A	B	D	D1	n-φ
2	50	60.3	300	222	19	153	121	4-19
2 1/2	65	73	300	247	19	178	140	4-19
3	80	88.9	300	260	19	191	153	4-19
4	100	114.3	300	298	19	229	191	8-19
5	125	141.3	300	323	20	254	216	8-23
6	150	168.3	300	348	20	279	241	8-23
8	200	219.1	300	412	23	343	299	8-23



### Instruction For Pipe Grooving

1. Cut the pipe to length and remove any burrs.
2. Place the pipe in the grooving tool resting the free end on a stand.
3. Use a level to ensure the pipe is horizontal.
4. Clamp the pipe into the grooving tool.
5. Start the tool and produce the groove to the predefined depth.
6. Use a depth gauge or Vernier caliper to check the groove depth.
7. Release the pipe.

4. Slide the gasket over both pipe ends and ensure gasket does not enter the grooves.
5. Ensure the both pipes are held in the same axis.
6. Place housings over the gasket and finger tighten nuts.
7. Gradually tighten nuts with no gasket pinched.

### Installation Instruction For Coupling

1. Ensure all burrs are removed from the pipe ends.
2. Ensure the gasket is suitable for intended service with no crack and split.
3. Gasket is pre-lubed, additional lubrication may be necessary.

### Installation Instruction for Mechanical Tee/Cross and Strap Tee

1. Determine the location of the tee and mark it.
2. Select the correct drill bit to cut a hole.
3. Clean up the pipe surface within 3/4" of hole to make sure it's free of foreign matter for gasket.
4. Disassemble tee and lubricate tee gasket.
5. Insert upper housing over the hole, align it and finger tighten nuts.
6. Wrench-tighten nuts evenly by alternating sides until housings are firmly installed against pipe with no gaps.



Grade	Temp. Range	Gasket Material	Color Code	General Service Application
E	-30°F to +230°F -34°C to +110°C	EPDM	Green	Water, oil-free air services and many chemical services Not for Petroleum services.
T	-4°F to +176°F -20°C to +80°C	Nitrile	Orange	Petroleum or oil services within specified temperature range and water waste. Not for hot water services.
L	-30°F to +350°F -34°C to +177°C	Silicone	Red	Dry, heat air without hydrocarbons and high temperature chemical services.
V	-22°F to +180°F -30°C to +82°C	Neoprene	Yellow	Excellent oxidation resistance for some chemical services.

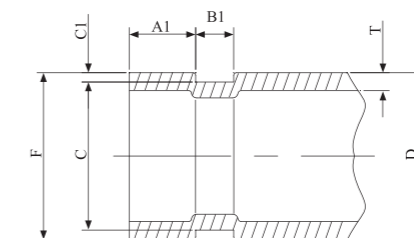
Note: for service not listed, please contact Recomb for further assistant.



SHANGHAI RECOMB PIPING SYSTEM CO.,LTD.

Imperial	Pipe O.D.	DIN	ANSI	JIS
inch	mm	mm	inch	mm
1/2"	21.3	15	1/2"	15A/21.7
3/4"	26.7	20/26.9	3/4"	20A/27.2
1	33.4	25/33.7	1	25A/34
1 1/4"	42.2	32/42.4	1 1/4"	32A/42.7
1 1/2"	48.3	40	1 1/2"	40A/48.6
2	60.3	DN&ISO 50	2	50A/60.5
2 1/2"	73.1		2 1/2"	
	76.1 DIN/ISO	DN&ISO 65		65A/76.3
3	88.9	DN&ISO 80	3	80A
4	108 old DIN	DIN 108		
	114.3	DN&ISO 100	4	100A
5	133 old DIN	DIN 133		
	139.7 DIN/ISO	DN&ISO 125		125A/139.8
6	141.3		5	
	159 old DIN	DIN 159		
6	165.1 JIS			150A/165.2
	168.3	DN&ISO 150	6	
8	216.3 JIS			200A
	219.1	DN 200	8	
10	267.4 JIS			250A
	273	DN 250	10	
12	318.5 JIS			300A
	323.9	DN 300	12	
14	355.6	DN 350	14	350A
16	406.4	DN 400	16	400A
18	457.2	DN 450	18	450A
20	508	DN 500	20	500A
22	558.8		22	550A
24	610	DN 600	24	600A

Nominal Size	Pipe O.D.		Tolerance	A1	B1	C1	Groove Dia C		Min. Thickness T Casting Thickness	Max Allow Flare Dia F	
	inch	mm		mm	mm		mm	mm			mm
1	1/4	25	33.7	+0.30 -0.50	15.9	7.2	1.7	30.2	-0.38	1.65	34.5
1 1/4	32	42(42.4)			15.9	7.2	1.7	39.0	-0.38	1.65	43.3
1 1/2	40	48(48.3)			15.9	7.2	1.6	45.1	-0.38	1.65	49.4
2	50	57		+0.80 -0.60	15.9	8.8	1.6	53.8	-0.38	1.65	58.9
2	50	60(60.3)			15.9	8.8	1.6	57.2	-0.38	1.65	62.2
2 1/2	65	73			15.9	8.8	2.0	69.1	-0.46	2.11	75.2
2 1/2	65	76(76.1)		+1.00 -0.80	15.9	8.8	1.9	72.3	-0.46	2.11	77.7
3	80	89(88.9)			15.9	8.8	2.0	84.9	-0.46	2.11	90.6
4	100	108			15.9	8.8	2.1	103.7	-0.51	2.11	109.7
4	100	114(114.3)		+1.40 -0.80	15.9	8.8	2.1	110.1	-0.51	2.11	116.2
5	125	133			15.9	8.8	2.0	129.1	-0.51	2.77	134.9
5	125	140(139.7)			15.9	8.8	2.1	135.5	-0.51	2.77	141.7
5	125	141.3		+1.60 -0.80	15.9	8.8	2.2	137.0	-0.51	2.77	143.5
6	150	159			15.9	8.8	2.2	154.6	-0.56	2.77	161.0
6	150	165(165.1)			15.9	8.8	2.2	160.8	-0.56	2.77	167.1
6	150	168(168.3)		+1.80 -0.80	15.9	8.8	2.2	164.0	-0.56	2.77	170.7
8	200	216.3			19.1	11.9	2.4	211.6	-0.64	2.77	220.7
8	200	219(219.1)			19.1	11.9	2.4	214.4	-0.64	2.77	221.5
10	250	267.4		+1.60 -0.80	19.1	11.9	2.4	262.6	-0.69	3.40	271.8
10	250	273			19.1	11.9	2.4	268.3	-0.69	3.40	275.4
12	300	318.5			19.1	11.9	2.8	312.9	-0.76	3.96	322.8
12	300	325/323.9		+1.80 -0.80	19.1	13/11.9	3/2.8	319/318.3	-0.76	3.96	327.3/326.2
14	350	377/355.6			25/23.8	13/11.9	5.5/2.8	366/350	-0.76	3.96	381.1/359.7
16	400	426/406.4			25/23.8	13/11.9	5.5/2.8	415/400.8	-0.76	4.19	430.1/410.5
18	450	480/457.2		+1.80 -0.80	25/25.4	13/11.9	5.5/2.8	469/451.6	-0.76	4.19	484.1/461.3
20	500	530/508			25/25.4	13/11.9	5.5/2.8	519/502.4	-0.76	4.78	534.1/512.1
24	600	630/610			25/25.4	13/12.7	5.5/4.4	619/600.9	-0.76	5.54	634.7/614.7

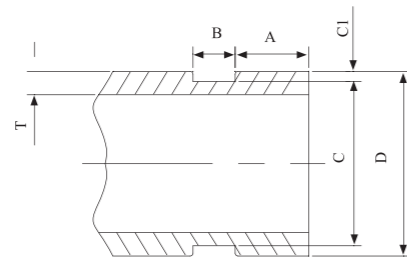


**JINGTECH INDUSTRIES, INC.**  
 Telephones: (+632) 668-2889 . 661-6141 . 646-5915 . 985-1843  
 Mobile: (+63917) 577-1162 . (+63908) 817-8995  
 TeleFax: (+632) 655-0273  
 Email: junagbayani@piddtsi.net . sales@jngtech.com

All data contained here is subject to change without notice.

All data contained here is subject to change without notice.

Nominal Size		Pipe O.D.	Tolerance mm	A ±0.50 mm	B ±0.50 mm	C1 mm	Groove Dia C		Min. Thickness T
Inch	mm	mm		mm	mm		mm	mm	mm
1	25	33.7	+0.30 -0.50	16	7.5	1.7	30.2	-0.38	3.3
1 1/4	32	42(42.4)		16	7.5	1.7	39.0	-0.38	3.5
1 1/2	40	48(48.3)		16	7.5	1.6	45.1	-0.38	3.6
2	50	57	+0.80 -0.60	16	8.2	1.6	53.8	-0.38	3.6
2	50	60(60.3)		16	8.2	1.6	57.2	-0.38	3.6
2 1/2	65	73		16	8.2	2.0	69.1	-0.46	4.0
2 1/2	65	76(76.1)		16	8.2	1.9	72.3	-0.46	4.0
3	80	89(88.9)	+1.00 -0.80	16	8.2	2.0	84.9	-0.46	4.5
4	100	108		16	9.3	2.1	103.7	-0.51	5.0
4	100	114(114.3)	+1.40 -0.80	16	9.3	2.1	110.1	-0.51	5.0
5	125	133		16	9.3	2.0	129.1	-0.51	5.0
5	125	140(139.7)		16	9.3	2.1	135.5	-0.51	5.0
5	125	141.3		16	9.3	2.2	137.0	-0.51	5.0
6	150	159		16	9.3	2.2	154.6	-0.56	5.4
6	150	165(165.1)	+1.60 -0.80	16	9.3	2.2	160.8	-0.56	5.4
6	150	168(168.3)		16	9.3	2.2	164.0	-0.56	5.4
8	200	216.3		19	11.2	2.4	211.6	-0.64	5.4
8	200	219(219.1)	19	11.2	2.4	214.4	-0.64	5.4	
10	250	267.4	+1.80 -0.80	19	12.5	2.4	262.6	-0.69	6.3
10	250	273		19	12.5	2.4	268.3	-0.69	6.3
12	300	318.5	+1.80 -0.80	19	13/12.5	2.8	312.9	-0.76	7.1
12	300	325/323.9		19	13/12.5	3/2.8	319/318.3	-0.76	7.1
14	350	377/355.6	+1.80 -0.80	25/23.8	13/12.9	5.5/2.8	366/350	-0.76	10/7.2
16	400	426/406.4		25/23.8	13/12.9	5.5/2.8	415/400.8	-0.76	11.6/8
18	450	480/457.2	+1.80 -0.80	25/25.4	13/12.9	5.5/2.8	469/451.6	-0.76	11.6/8
20	500	530/508		25/25.4	13/12.9	5.5/2.8	519/502.4	-0.76	11.6/8
24	600	630/610	+1.80 -0.80	25/25.4	13/14.5	5.5/4.4	619/600.9	-0.76	11.6/9.5



GS200  
Roll grooving machine



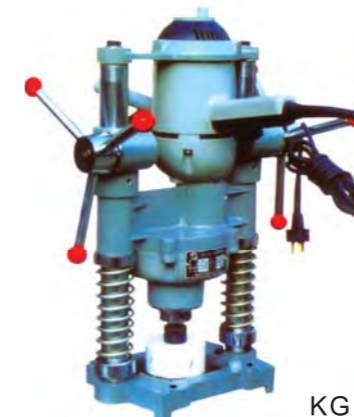
GS325  
Roll grooving machine



QG219  
Pipe cutting machine



QG325  
Pipe cutting machine



KG115B  
Hole cutting machine

### Pipe Preparation Tools

Tool Model	Description	Pipe Size	Power Voltage	Power Frequency
		inch	V	Hz
GS200	Roll grooving machine	1" - 8"	220 - 380	50 - 60
GS325	Roll grooving machine	2" - 12"	220 - 380	50 - 60
QG219	Pipe cutting machine	4" - 8"	220 - 380	50 - 60
QG325	Pipe cutting machine	4" - 12"	220 - 380	50 - 60
KG115B	Hole cutting machine	1/2" - 4"	220 - 380	50 - 60



**Warning**

when start loading pressure on system, please do not either loosen or tighten the bolt/nut for all components of system.



## Warranty And Limitations Of Liability

Recomb warrants its products to be free from defects in materials and workmanship under normal use and service and to be in accordance with customer specifications and/or related FM/UL standards for a period of one year after date of receiving the shipment.

Buyer: within this warranty period must give Recomb written notice of any defect claim and promptly return the defective product prepaid after first receiving Recomb authorization to return. Recomb will thereafter either replace or refund such products found to be defective herein. This warranty does not include, nor does Recomb assume responsibility for defects or damage caused by misuse, improper installation and service or repair by others. This warranty is given in lieu of and excluding all other warranties, express or implied, including those of merchantability or fitness for a particular purpose. The remedies stated herein are exclusive remedies and Recomb should not be responsible or liable for any indirect, consequential or incidental damages or further loss of any kind whatsoever.

While we provide application assistance on Recomb products it is the responsibility of the customer to determine the suitability of the product in the intended use.

All technical data refers only to updated version of RECOMB catalogue.

**Disclaimer:** Recomb cannot be held responsible for omissions or errors in this catalog. Please contact our head office for any assistant.